



2785 Euclid Heights Blvd
Cleveland Heights Ohio
www.grogshop.gs
216-321-5588

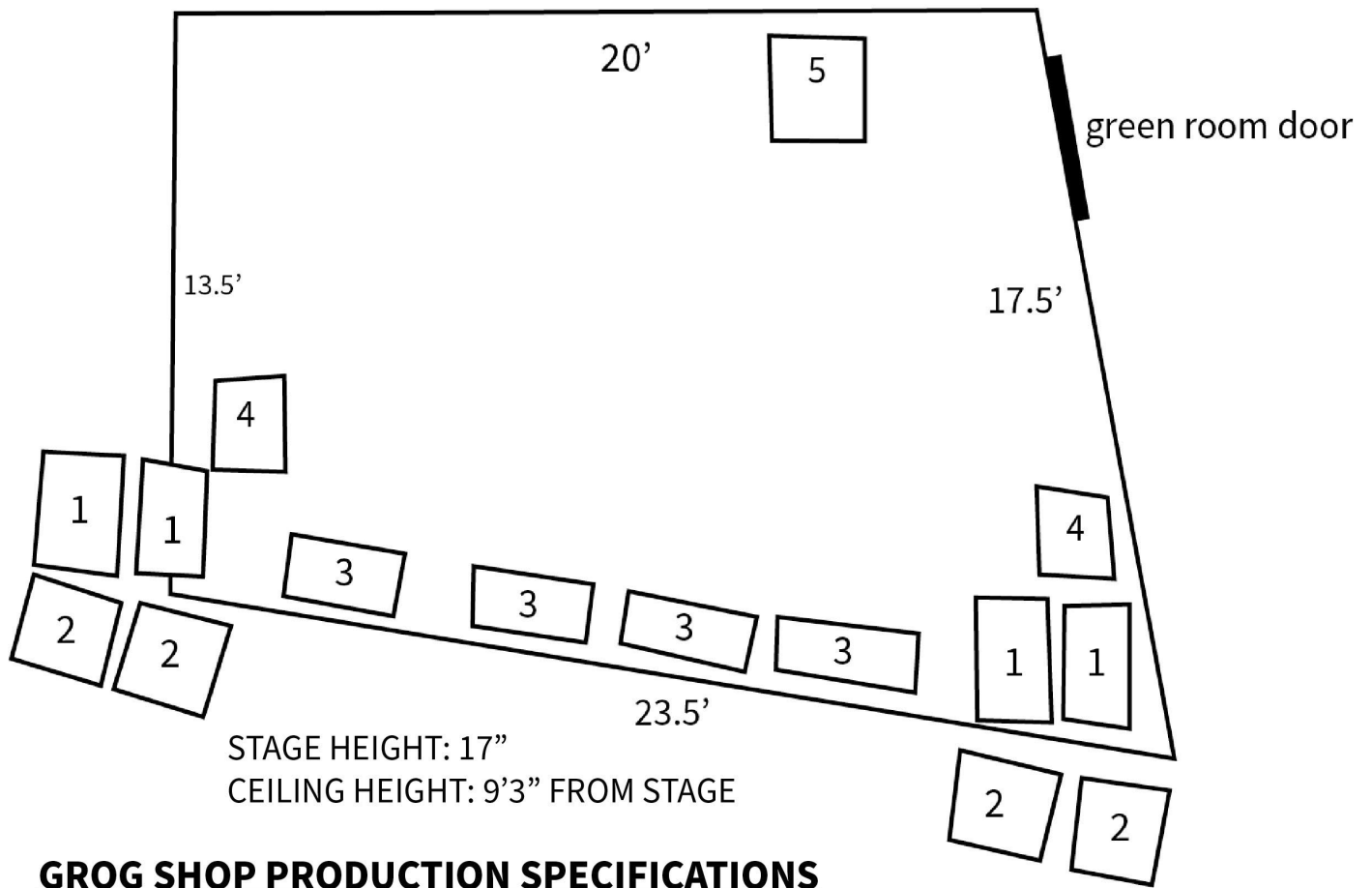
Grog Shop Technical Packet

as of 01.12.22

Advance contacts:

Kathy Blackman, Owner & Booking
grogkat@gmail.com
216.346.3093

John Neely, Venue Manager
grogshopjohn@gmail.com
John Kalman, Audio Engineer
grogkalman@gmail.com
Josh Blasko, Audio Engineer
jblaskoaudio@gmail.com



GROG SHOP PRODUCTION SPECIFICATIONS

FOH

CONSOLE- MIDAS M32

PA

LINEA 88C SERIES AMPLIFIER

ARRAY 4 EV QRX 115-75 (1)

SUBS 4 EV QRX 218 2- VS218 (2)

LIGHTING

TIGER TOUCH II DMX CONTROLLER

6-LED PARS DOWNSTAGE

6-LED PARS UPSTAGE

CURTAIN LED

CAM 100A PHASE TIE IN

STAGE 4 20A QUAD BOXES

PROJECTION

DELL 7760 WITH FOH & DOWNSTAGE HDMI

MONITORS

SIDE FILLS- 2 QSC K12 POWERED WEDGES (4)

FLOOR - 4 QSC K12 POWERED WEDGES (3)

DRUM FILL - QSC KW-153 (5)

Venue Stage Plot and FOH Information



The brilliance of the Midas M32IP Digital Mixing Console is its simplicity and workflow. Tactile controls allow smooth adjustments to critical elements as the mix progresses while the TFT screen keeps you informed every step of the way. This integration of tactile controls, motorized faders and the array of LCD and TFT displays makes the experience the premiere solution for Live Sound, Broadcast, Studio Recording and Post Production applications.

Whether you come from an analogue mixing background, or are accustomed to using other digital consoles, your first experience with M32 has been engineered to be intuitive, fluid and straightforward.

Console Specifications

- 40 input channels
- 32 microphone preamps
- 25 time-aligned and phase-coherent mix buses
- AES50 networking allows up to 96 inputs and 96 outputs
- 192 kHz ADC and DAC converter
- 8 stereo signal processing effects engines
- 25 100mm faders
- 7" full color TFT display screen
- 32x32 channel USB 2.0 audio interface
- DAW remote
- 8 DCA and 6 mute groups
- 40 bit floating point digital signal processing

2785 Euclid Heights Blvd
Cleveland Heights Ohio
www.grogshop.gs
216-321-5588

Venue Spec Sheet:

FOH

Audio: Midas M32, console handles FOH and MONS

Lighting: Tiger Touch II DMX controller

6-LED PARS downstage

6-LED PARS upstage

Curtain LED

Stage-4 20A quad boxes

Amp/Monitor World

LINEA 88C Series Amplifier

4 EV QRX 115-75

4 EX QRX 218 2-VS218

100 amp 3 Phase Camlocks for guest lighting power

40 channel XLR analog split with 8 returns sidestage

On Stage

Power:

(4) 20 amp circuits for backline

Monitors:

(4) QSC K12 monitors downstage, 2 flown SR and SL as sidefills

(1) QSC KW153 drumfill

FOH:

(4) EV QRX 115/75 (2 per side)

(4) EV QRX 218S (2 per side)

Lighting:

Tiger Touch II DMX controller

6 upstage PAR cans

6 downstage PAR cans

curtain LED's

I/O:

16 channel XLR/1/4" snake upstage center

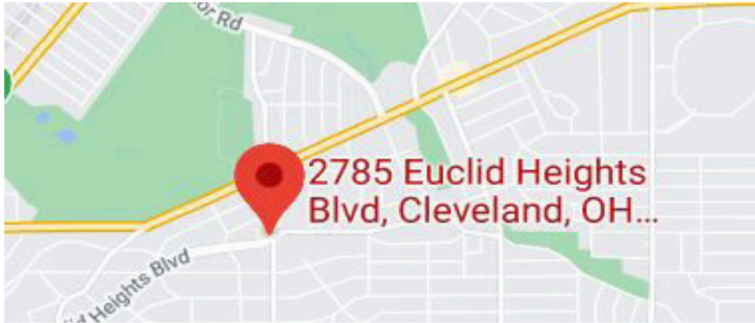
6 channel XLR snake downstage

(2) 8 channel XLR snakes

Maps & Directions

The Grog Shop is located at the corner of Coventry and Euclid Heights Boulevard in Cleveland Heights. All parking in the Coventry neighborhood is street parking or in metered lots. After 6pm, street parking is free.

If you are in a band that is playing at the Grog Shop and you're loading in, load-in is through the front doors. You can double-park with your hazards on in front of the club to complete your load-in process.



The Grog Shop is located in the vibrant Coventry Village neighborhood of Cleveland, Ohio. Historically known as a hub of Northeast Ohio's artistic, musical, and creative communities, Coventry Village has been compared to the Haight-Ashbury district in San Francisco and Greenwich Village in New York City.

The Grog Shop is within walking distance to many shops and restaurants, including Record Revolution, Mac's Backs independent book store, Grum's sub shop, Phoenix Coffee, High Thai'd, and more. There are also a handful of hotels within driving distance, including the Tudor Arms Doubletree, Courtyard Marriott, and the Glidden House.

Microphone Inventory:

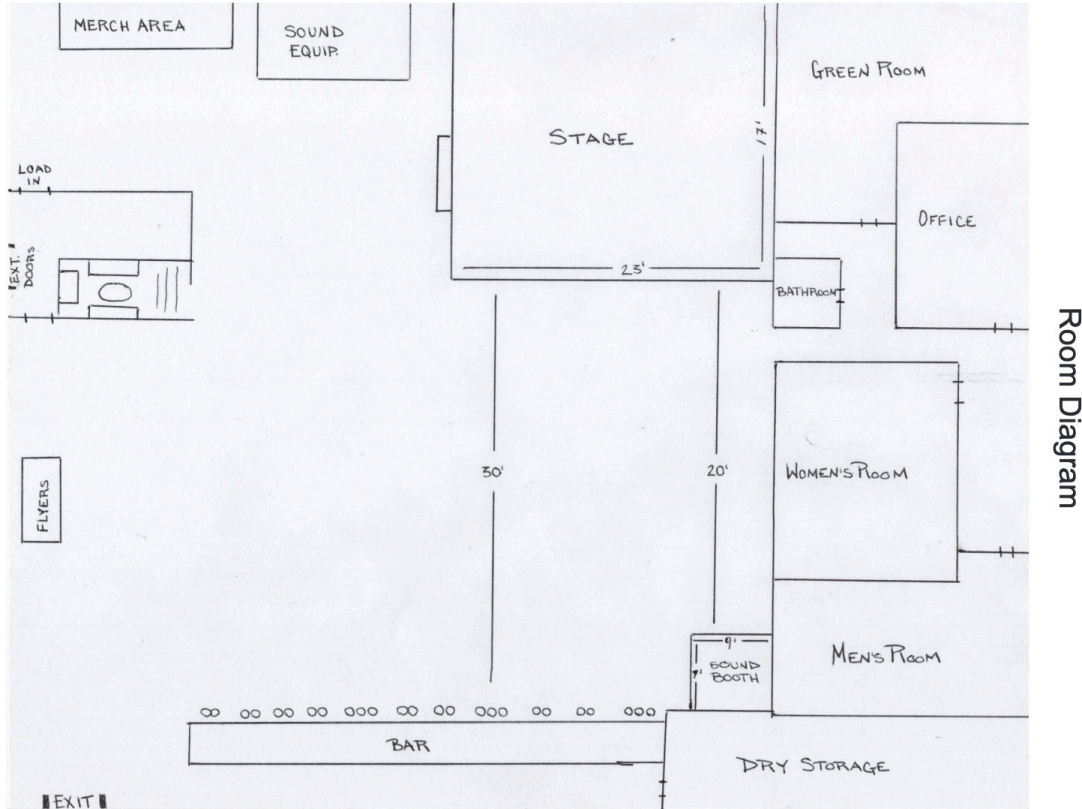
- 4 Sennheiser e835
- 10 Shure SM58
- 2 Shure SM58 wireless
- 10 Shure SM57
- 1 Shure Beta 57a
- 2 Shure Beta 58
- 1 Shure Beta 91a
- 1 Shure SM81
- 2 Audix D6
- 9 Sennheiser e604
- 1 Sennheiser e602
- 2 CAD D10
- 2 CAD D80
- 2 Rode condenser
- 2 Audix F90 clip-on

DI Inventory:

- 3 Radial passive
- 3 Radial D2 stereo
- 2 Radial passive
- 2 Radial J48 stereo
- 1 Radial AV1 multimedia

Mic Stands:

- 10 tall tripod boom stands
- 10 short tripod stands
- 2 tall straight stands
- 2 short D stands
- 1 round base short stand



2785 Euclid Heights Blvd
 Cleveland Heights Ohio
www.grogshop.gs
 216-321-5588

Lighting:

Tiger Touch II DMX controller

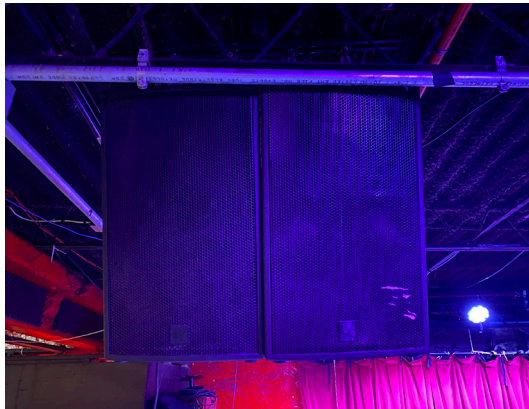
<https://store.creativestagelighting.com/item/30-01-3020/Avolites-Tiger-Touch-II/>



Venue Photos:



(stage from center floor)



(2 pair per side, speakers & subs)